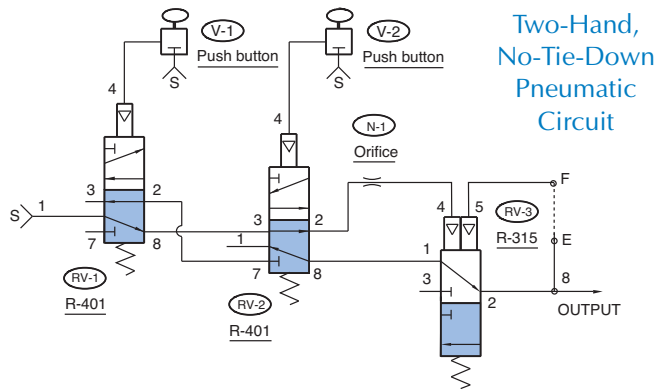


STEP ONE

Pneumatic Circuit

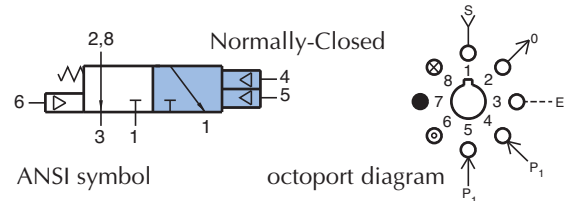
The first step in building a modular circuit is designing the pneumatic circuit using ANSI symbols.

We have chosen the Two-Hand, No-Tie-Down Circuit ([page 232](#)) for this demonstration.



STEP TWO

Specifications for the [R-315](#) modular valve



Octoport Diagrams

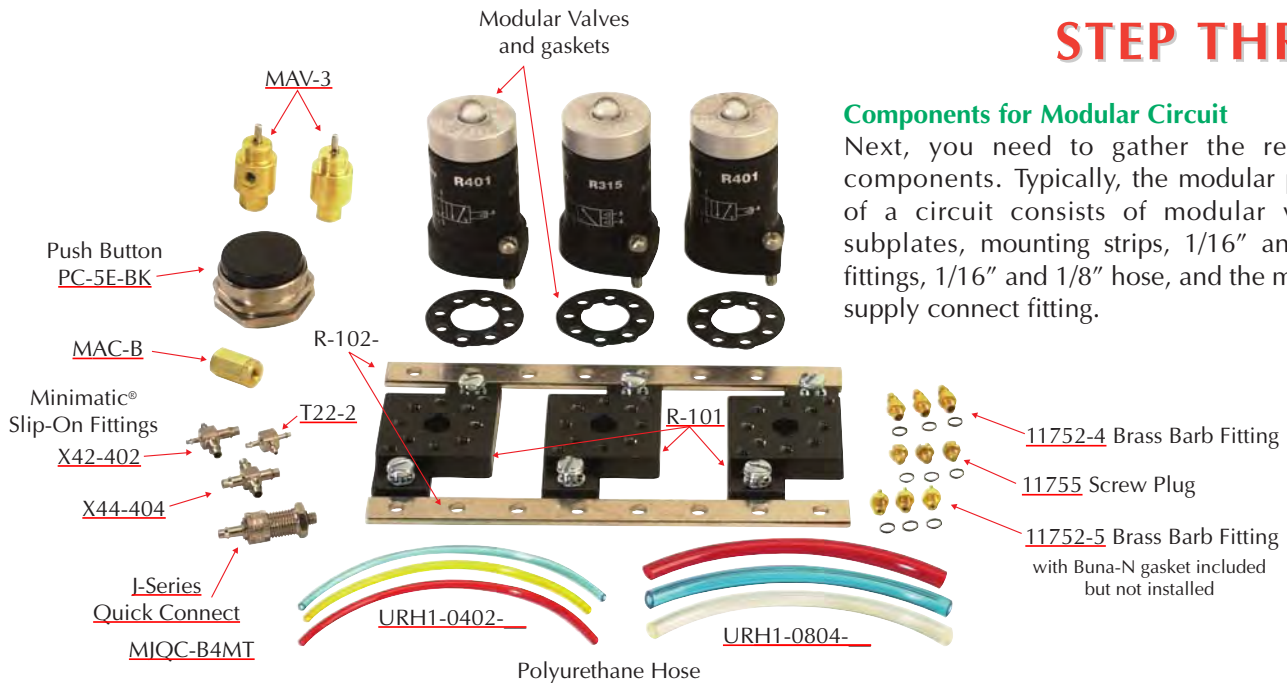
The next step is selecting the octoport diagram for each modular valve. Each Clippard modular valve (R-series) has its own unique octoport diagram which is shown to the right of the ANSI symbol.

See [page 242](#) for clues for deciphering the Octoport port coding.

STEP THREE

Components for Modular Circuit

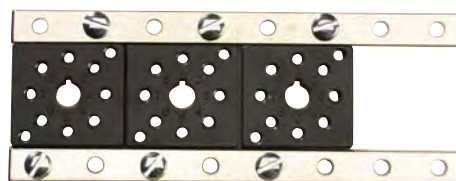
Next, you need to gather the required components. Typically, the modular portion of a circuit consists of modular valves, subplates, mounting strips, 1/16" and 1/8" fittings, 1/16" and 1/8" hose, and the main air supply connect fitting.



STEP FOUR

Mounting Strip and Subplate Assembly

The next step is assembling the mounting strips (R-102) and subplates (R-101/R-101-M5).



Possible configurations for subplates

